



# welcome to moa

Mercure Hotel MOA Berlin is  
your all-in-one perfect match for  
tailor-made experiences and  
stays of every kind - for  
business and private occasions.





## MOA Berlin

### Stay.

Modern 4\*\*\*\*Mercure Hotel with 336 comfortable rooms & suites.

### Meet.

Central event location for conferences, meetings & conventions of various formats.

### Eat.

Culinary variety in the large restaurant with front cooking kitchen as well as MOA Event Catering & 3 separate event bars.

### Work.

Food Start-up Hub in the Food Tech Campus & the co-working area on the first floor.





## MOA Berlin

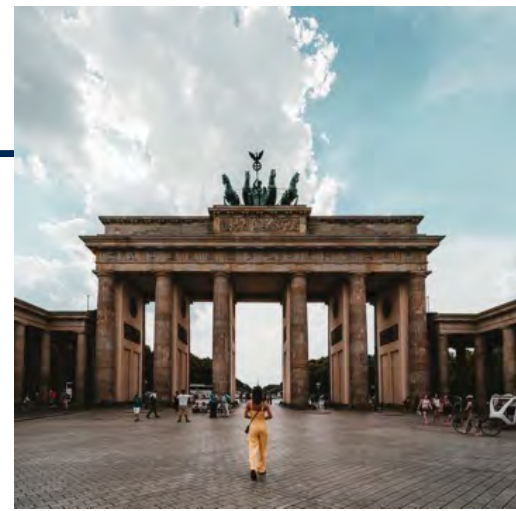
MOA Berlin is a true all-rounder and much more than a conference hotel.

Whether award ceremony or meditation guru, whether meeting or Sunday brunch, whether city trip or business meeting - we live and love every day anew the many facets of encounters - because we burn for it!

MOA Berlin is located directly in the center of the capital. With our modern flair we promise business and private travelers as well as event participants a pleasant stay.

Our green atrium forms the center of the hotel and provides a special feeling in the middle of the capital.





Berlin



**3**

Public transport lines  
directly S/U Westhafen U  
Birkenstraße

**15**

Bus minutes to  
the main station

**11**

BER-Express-lines per hour from  
BER to Berlin City

**45**

Minutes by car to  
BER airport

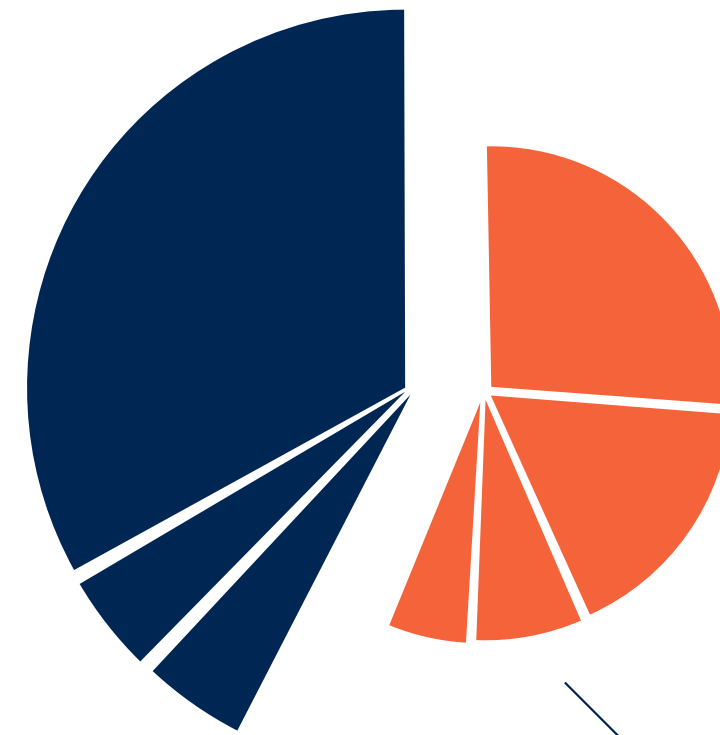


Being located near Tiergarten and former industry, we connect directly to the pulse of the capital - as a pole of calm in the urban mesh.





Mercure Hotel MOA Berlin



**336**

Rooms & Suites

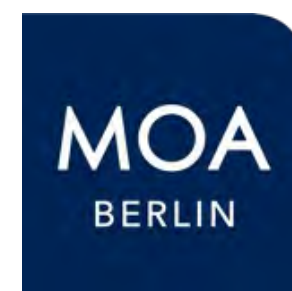
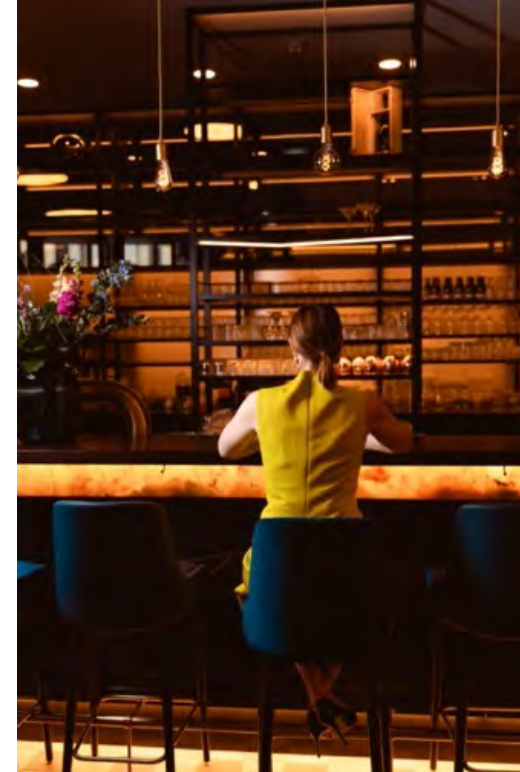
**24h**

Rezeption & Service

**440**

Parking spaces incl. 6 e-charging stations in the hotel parking garage

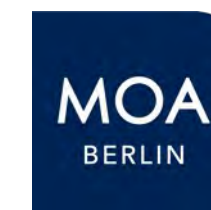
MOA MEET







# MOA Berlin



**MERCURE**  
HOTEL

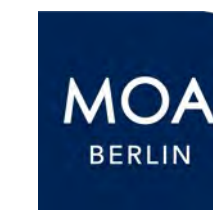
No matter what day it is and in which of our 336 rooms - we ensure that our guests find the necessary rest and relaxation after a successful day of events.

336 rooms & suites | 4 stars | 24/7 reception | room allotments possible | 440 parking spaces





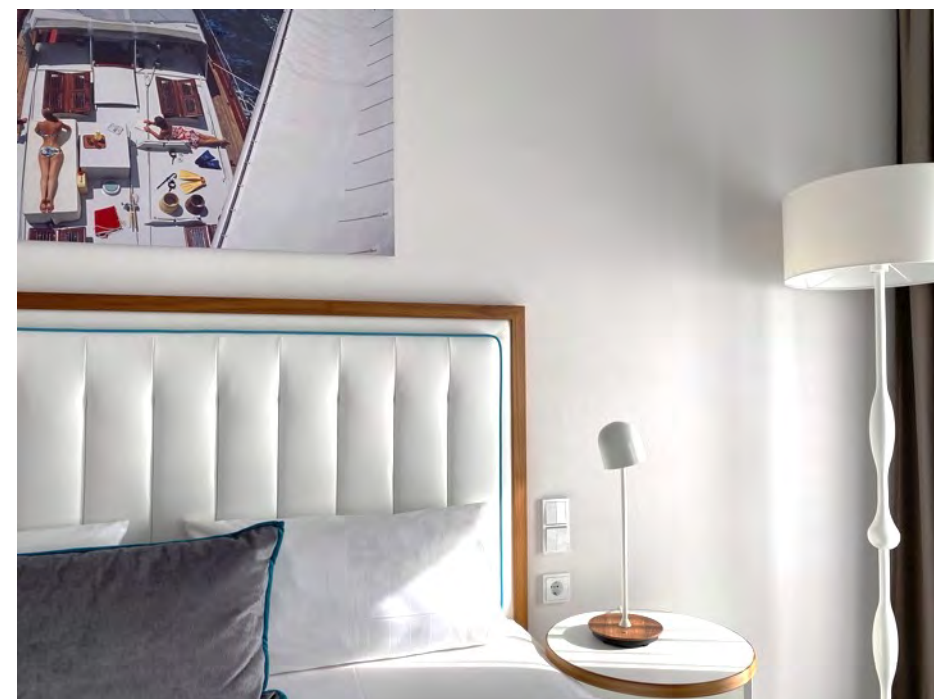
# MOA Berlin



**MERCURE**  
HOTEL

Standard & Superior Double Rooms | Standard Suites | Executive Maisonette Suites | Single Rooms.

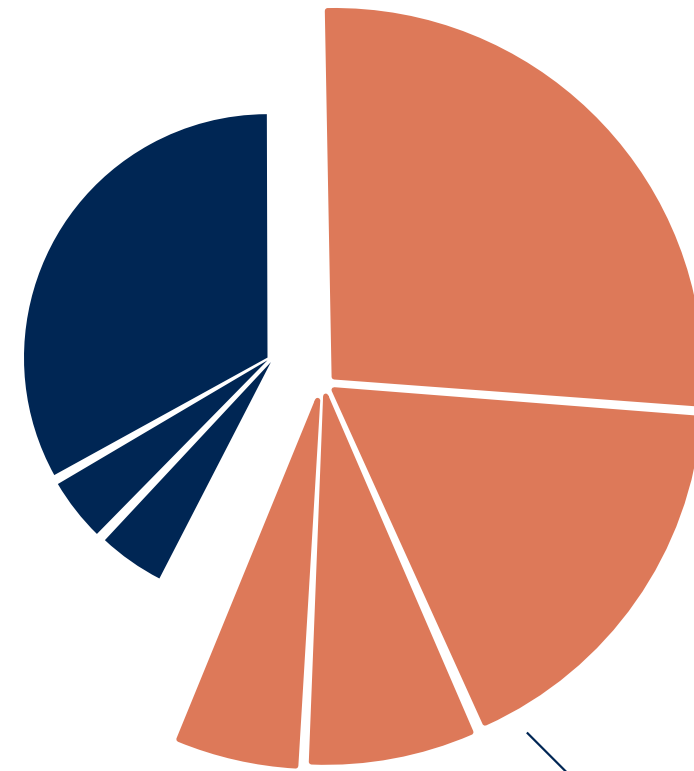
Our spacious rooms are at least 20 m<sup>2</sup> in size and ideally suited to guest needs. In addition to a flat-screen TV and telephone, they feature a high-quality double bed, comfortable seating, a functional workstation and free Wi-Fi.







Mercure Hotel MOA Berlin



MOA MEET

**5.000m<sup>2</sup>**

total space with high quality conference technology

**4.000**

guests

**40**

event rooms of various sizes

**MOA**  
MEET



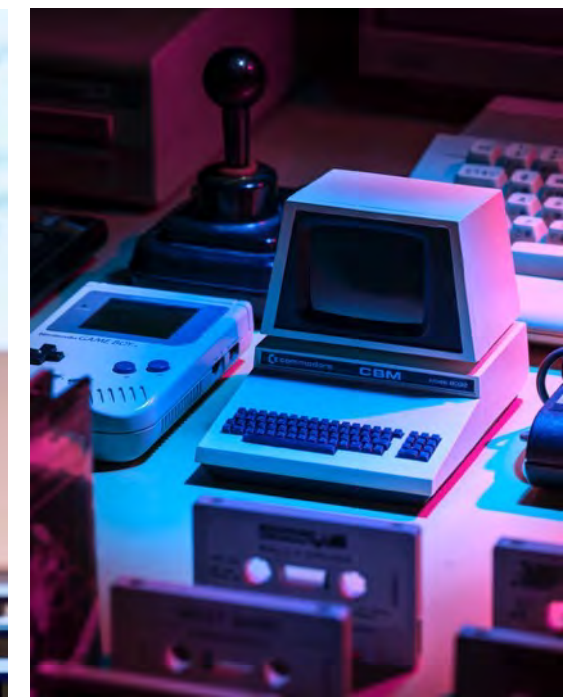


**We find the perfect match.**

Our 40 event spaces consisting of different sized meeting rooms and meeting suites, the Convention Hall and the light-flooded Atrium, are spread over three event levels. Thanks to our **flexible room concept**, everyone is guaranteed to find their favorite room constellation for their event.

**40 conference and event rooms** | 5,000 m<sup>2</sup>  
4,000 guests | Conferences & meetings  
Fashion shows | Conferences | Trade fairs  
Product presentations | Private business  
lunches & dinners | Concerts & musicals  
LED lighting concept | 4m ceiling height  
12m ceiling height in the atrium





## Hybrid & virtual.

Our goal - a consistent experience

Our partners work innovatively & support you with years of experience.

From live video streams, to digital check-in, virtual booths or digital collaboration networks during your event. Our gigabit connectivity stands the test of time.

## Know-How & Equipment

Professional know-how of internal technicians as well as external technology partners.

Tailor-made & field-tested technology concepts. Consulting & planning of technical requirements.

Creative & budget-oriented implementation.

High-speed wifi for digital & hybrid formats.

## MOA Meet Tech Stack

Sound. ideal room acoustics, tuned digital sound technology & wireless microphony.

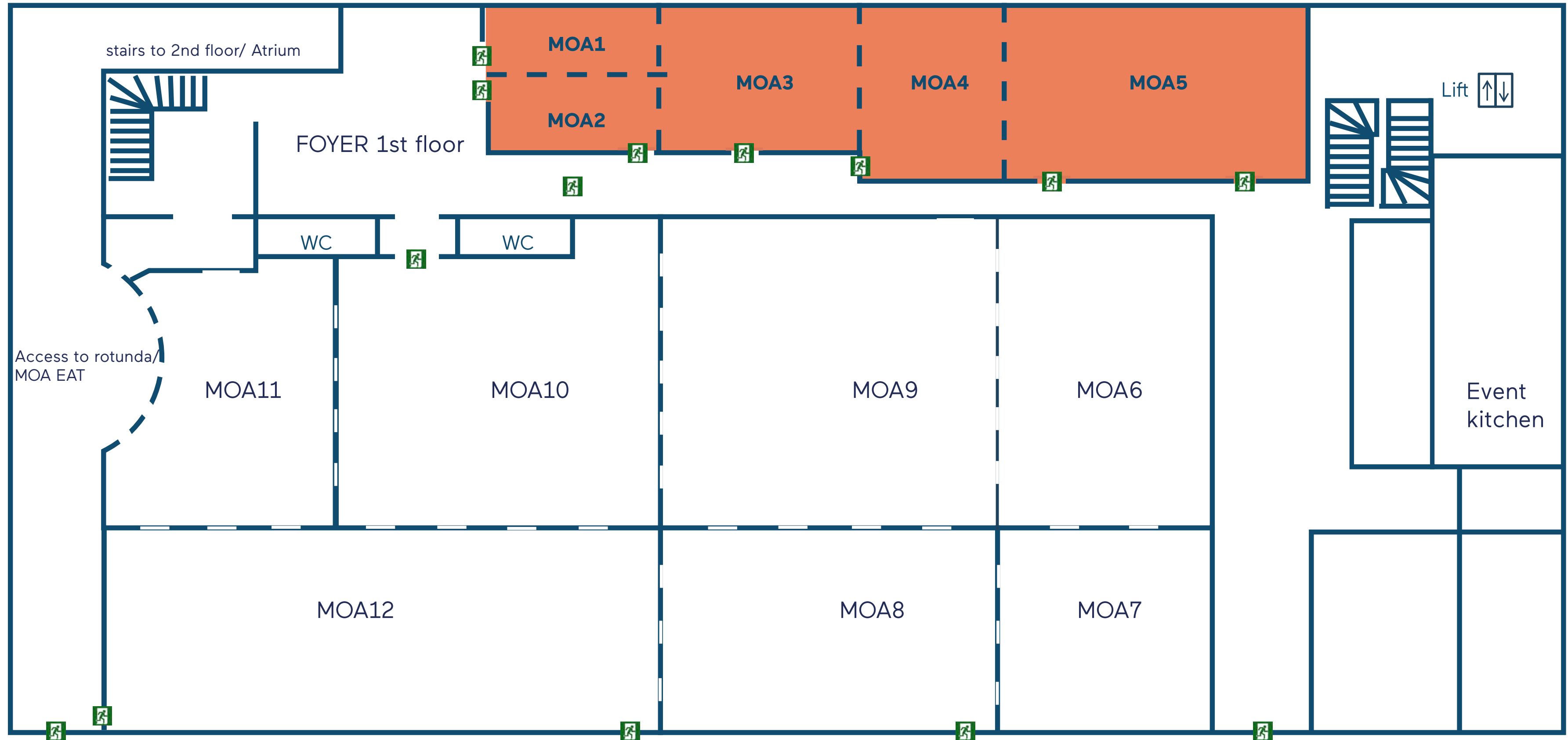
Conference. Powerful projectors, video conference systems incl. microphone technology.

Lighting. Moving light systems, spotlights, fog machines, projectors & individual LED lighting concept.

Media: powerful projection technology, large screen formats & LED technology. Stage construction & rigging: flying systems & trusses



# 1st floor: MOA 1 – MOA 5

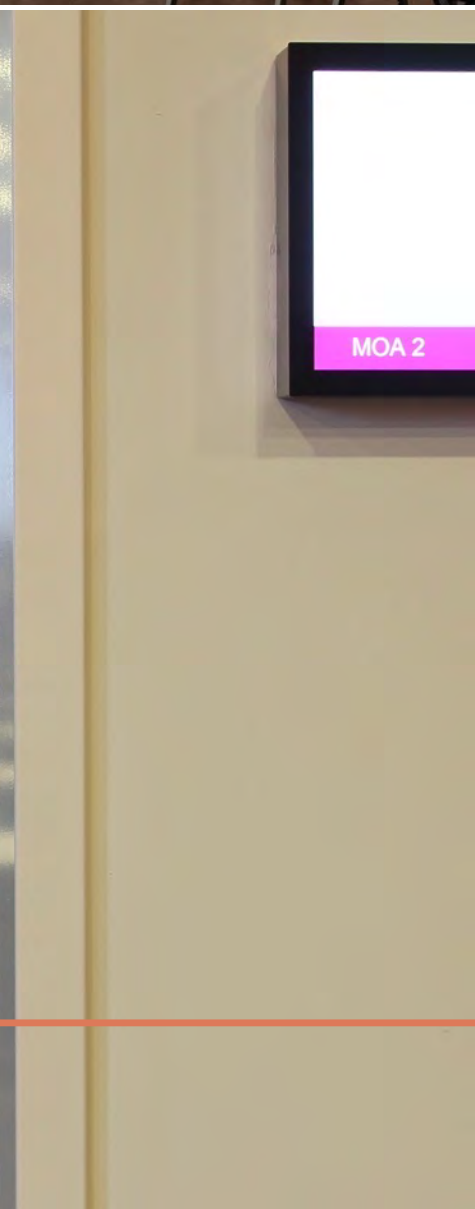






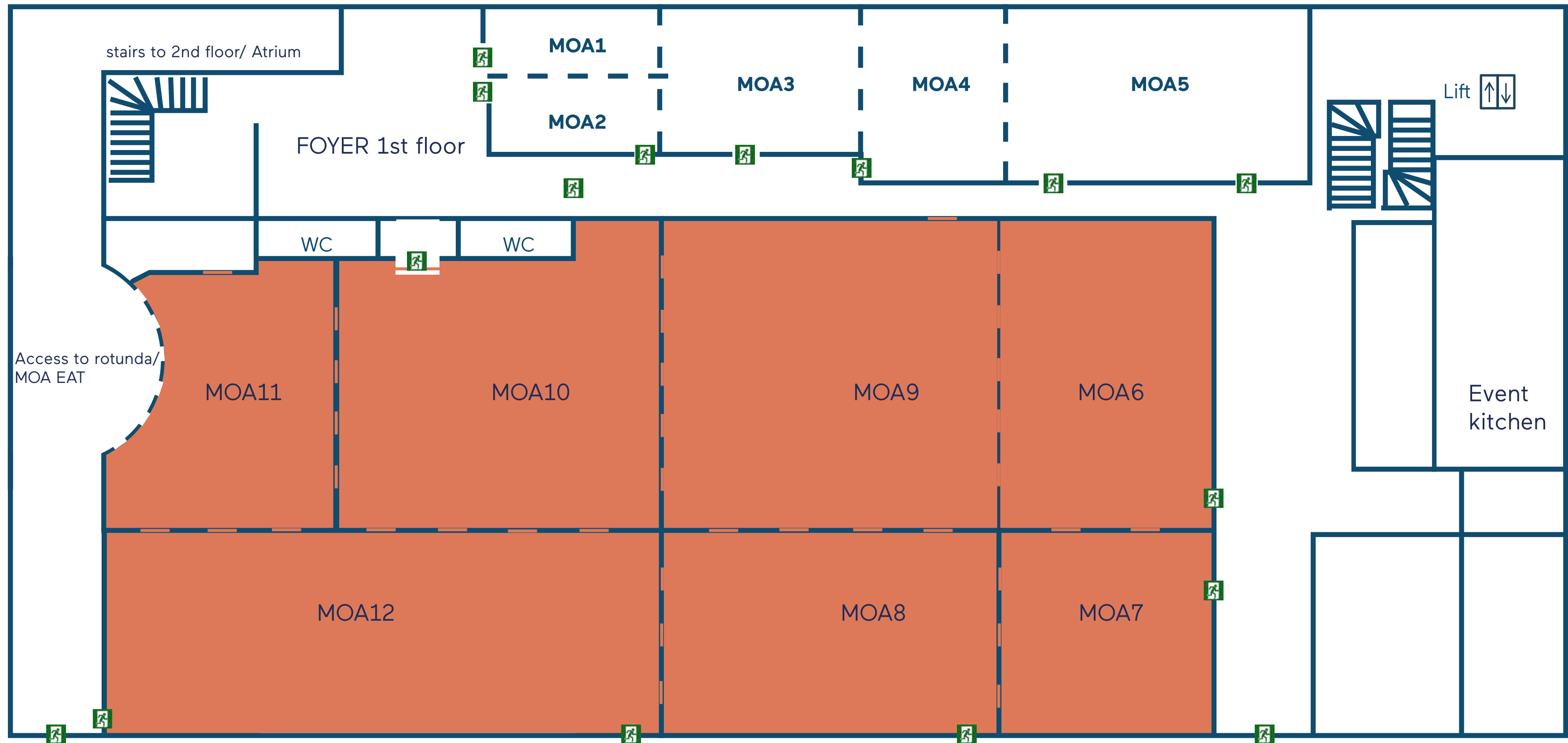
# MOA 1-5

708 m<sup>2</sup> separable into 5 sections  
Daylight, air-conditioned, car-accessible, modern carpeting  
LED lighting concept & digital signage  
4 m ceiling height  
Separate entrance area possible





# 1st floor: MOA 6–MOA 12 | Convention Hall







# MOA 6-12

2400 m<sup>2</sup> divided into 7 sections, air-conditioned, accessible by car, power connections available, modern lighting concept, high-quality carpet/parquet flooring, separate entrance area possible, 4 m ceiling height.  
floor load 509 kg per m<sup>2</sup>





# MOA 6-12

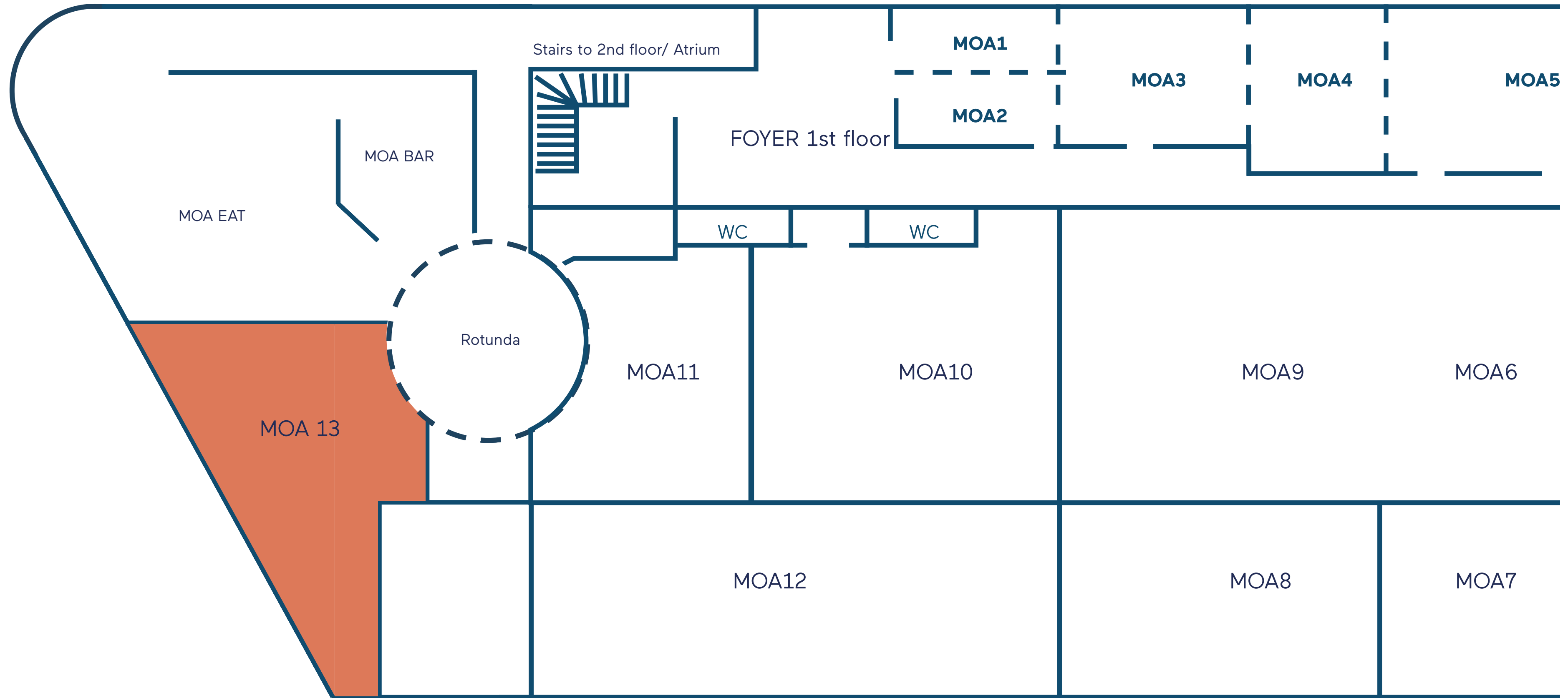
Due to the flexible room concepts, our meeting rooms of different sizes can be combined with each other.

Our modern LED lighting concept allows you to design your meeting room individually according to your corporate identity specifications.

Conferences | Company celebrations | Fashion shows | Trade fairs | Congresses | Concerts



# 1st floor: MOA 13







# MOA 13

Daylight

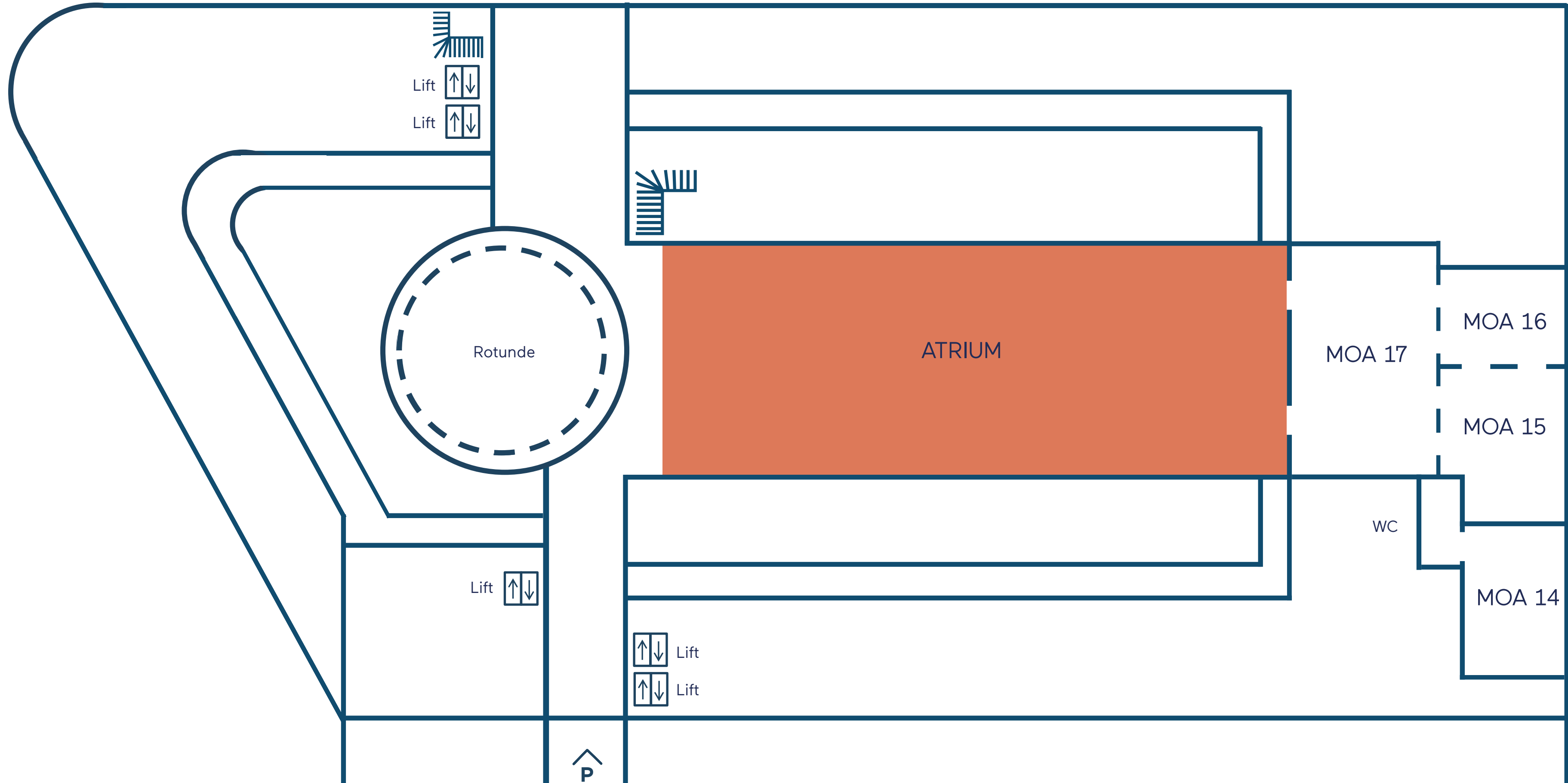
The versatile event space of MOA 13 is ideal for lectures, readings, exhibitions, workshops, seminars.

On request only.

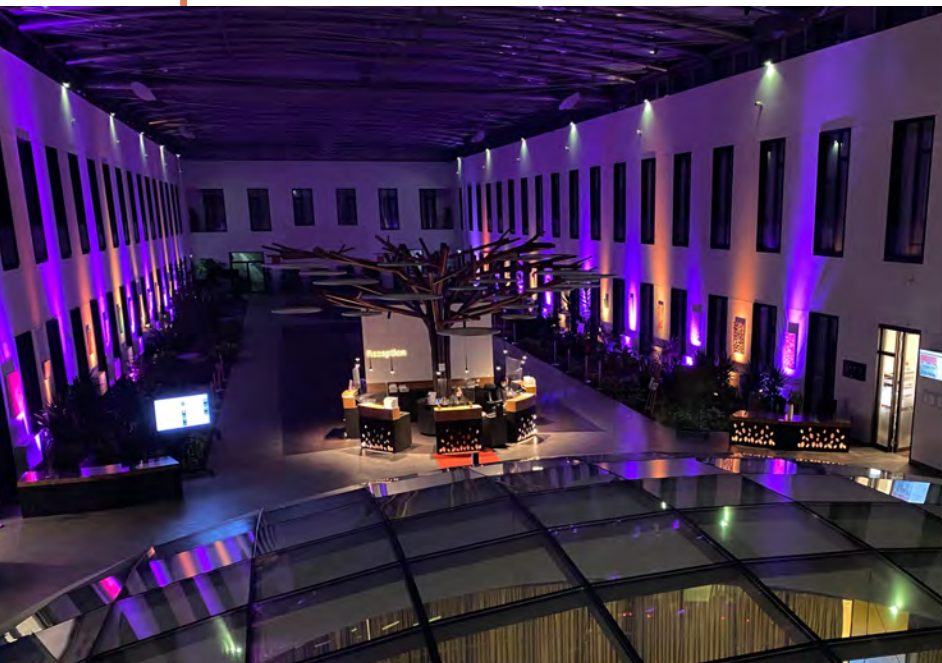




# 2nd floor: The Atrium





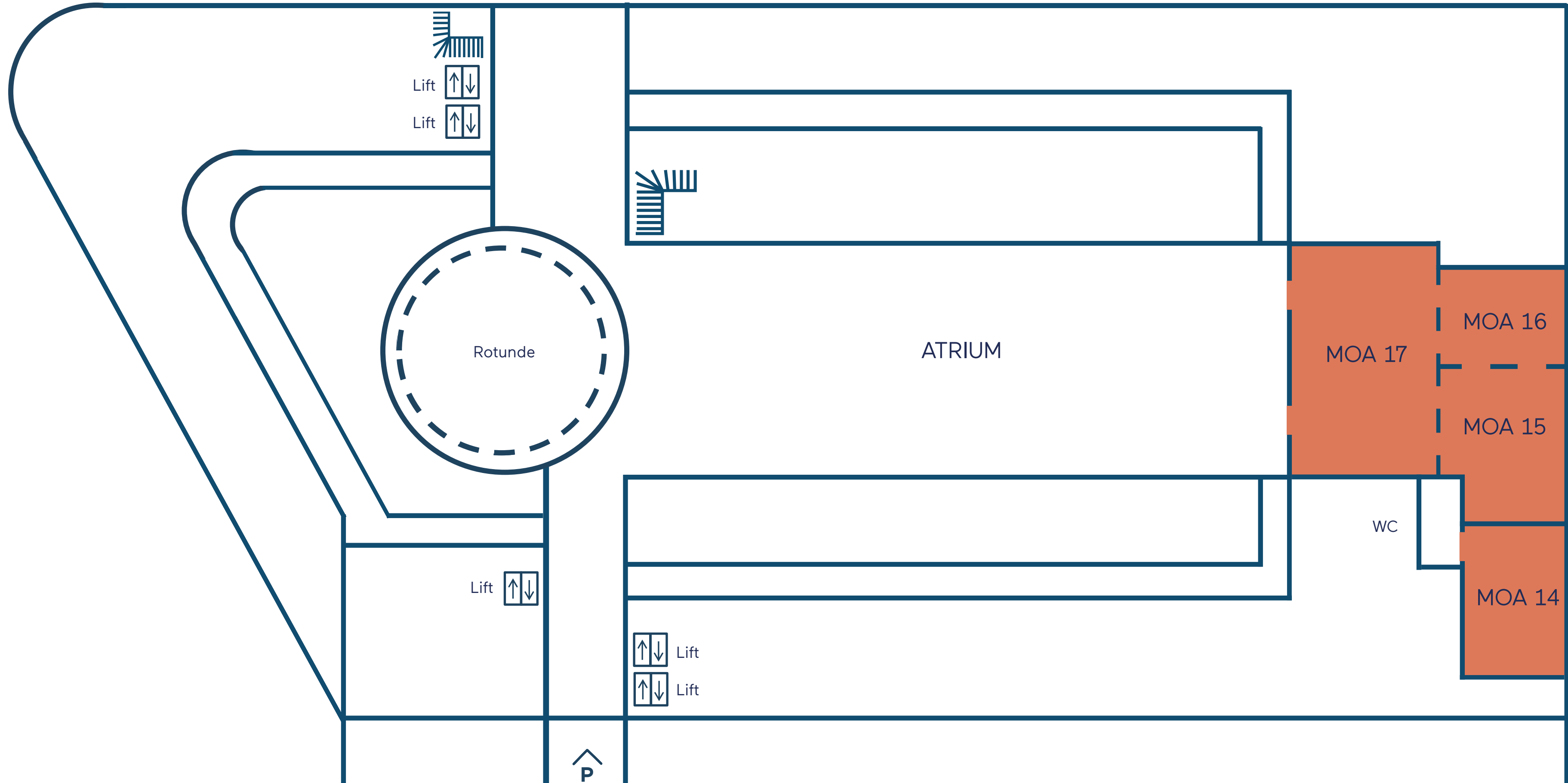


# Atrium

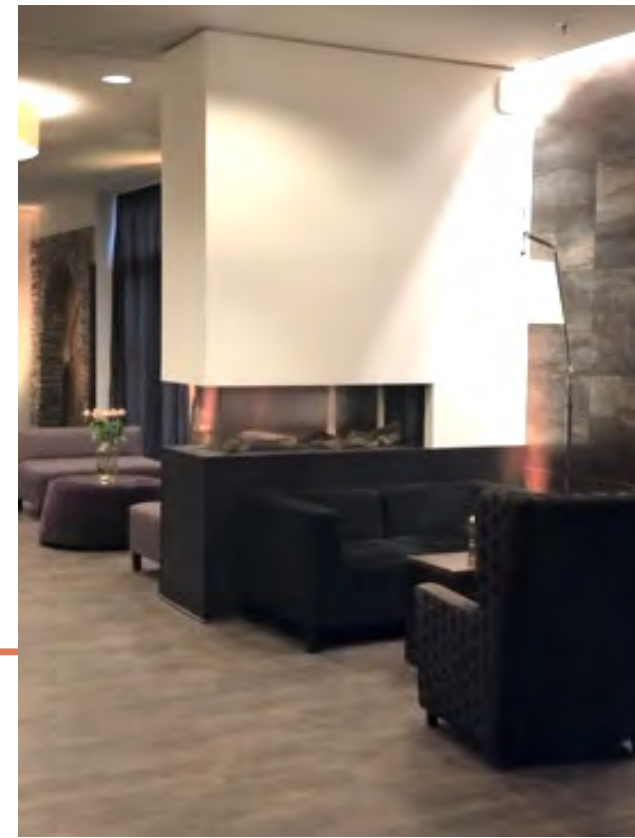
1.600 m<sup>2</sup>  
12 m ceiling height  
Floor load 509 kg per m<sup>2</sup>  
Flooded with daylight  
Decorative green areas



# 2nd floor: MOA 14 – MOA 17







# MOA 14-17

570 m<sup>2</sup> exclusive event area

4 rooms from 105 - 173 m<sup>2</sup>

Exclusive foyer with bar

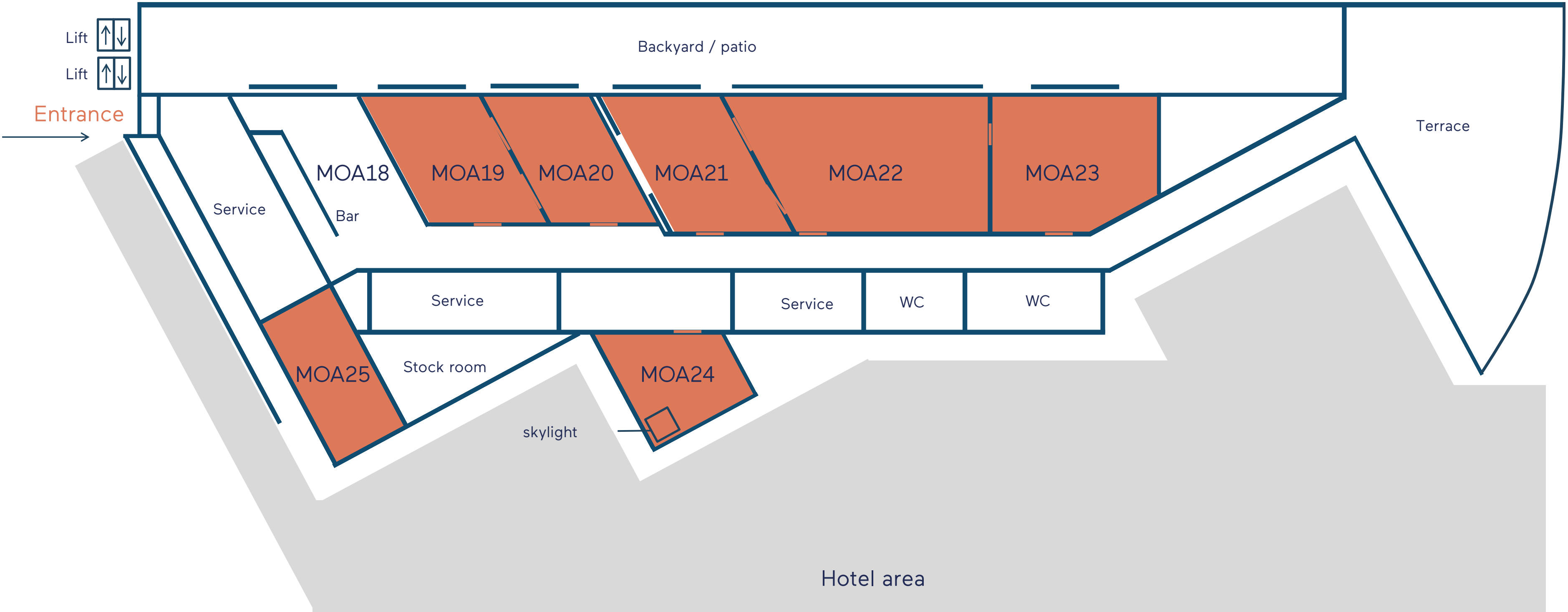
Variable combination up to 430 PAX  
expandable through the atrium

Daylight

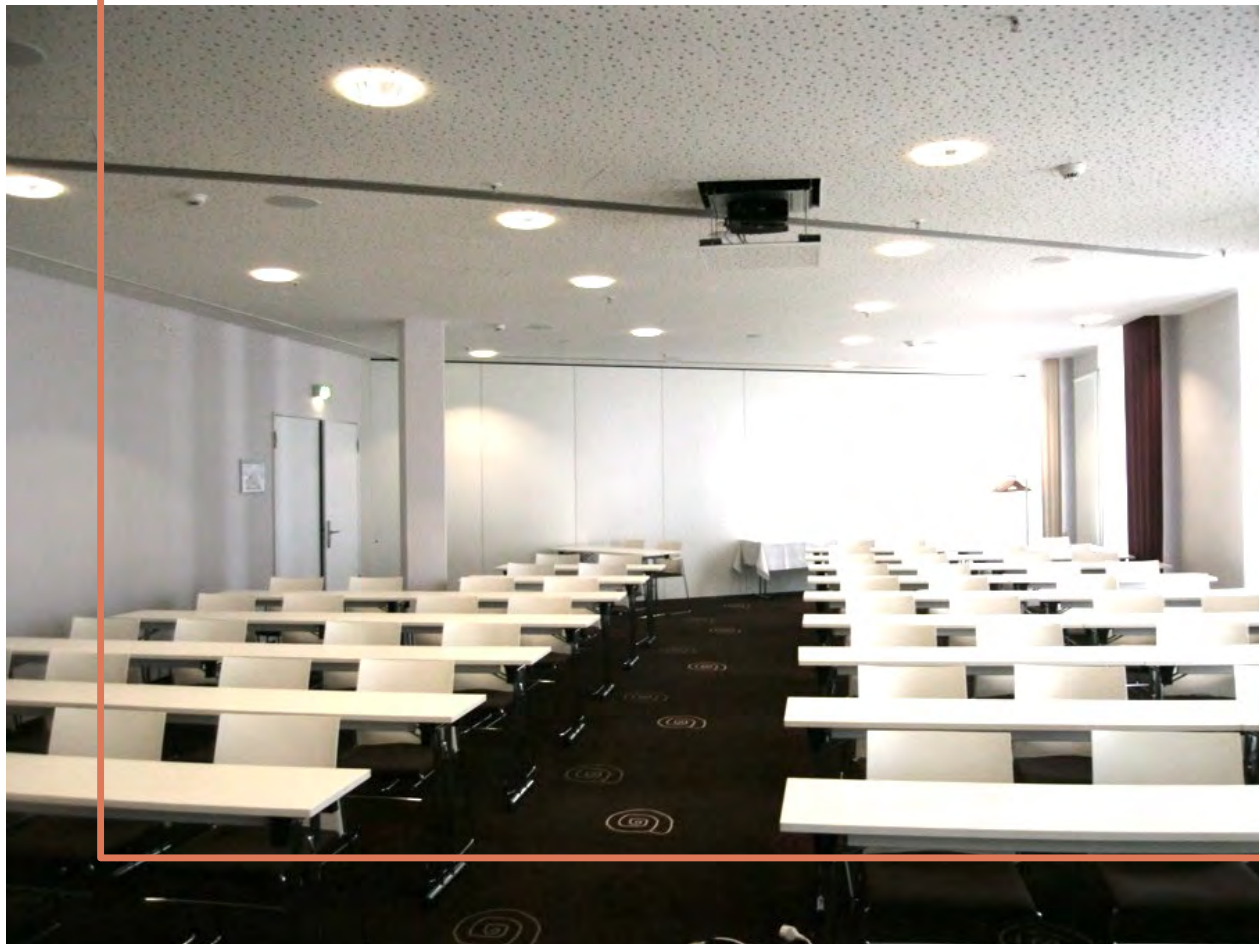
Versatile event space for lectures,  
readings, exhibitions, workshops &  
seminars



# 3rd floor: MOA 18 – 25







# MOA 18–25

- Daylight
- Air-conditioned
- Modern carpet
- Exclusive terrace access
- Foyer including bar
- 3.10 m ceiling height
- MOA 18 - 23 can be combined throughout
- Independent event area





## Nice to suite you!

Our 10 loft-style meeting suites provide absolute big city flair & a meeting experience of a different kind.

Whether business meetings, coaching sessions or private lunches - our conference suites ensure a productive meeting in a cozy living room atmosphere. The integrated kitchenette with refrigerator and coffee maker allows you to hold private meetings - completely undisturbed.

30 m2 per floor | Daylight | WC





# Suite Life

Our Business & Meeting Suites







## For Food Lovers.

Whether it's breakfast with a fresh kick, Mediterranean antipasti in a meeting, Berlin classics reinterpreted or a menu of your choice - our kitchen team knows how to think big and cook to the point!

Front Cooking | 380 seats | separable restaurant areas | catering for large events

Invite your guests to our MOA BAR for after-hours in the evening or combine your meeting with a subsequent lunch or dinner directly in the MOA BAR?

75 m2 | 70 PAX | Exclusively bookable





## Event Catering

Catering for every conference and large event.

Oriental bagels with halloumi, a typical Berlin Stulle or rather wholemeal bread & smoothie shots?

Our MOA toppings give your event that certain kick from the candy bar to pimp-your-secco or our colorful waffle station!





## Tailor-made.

**Included:** Basic technology equipment for your first meeting room: projector | screen | flip-chart | pin board | presentation case | WLAN.

**On request:** From storage table, to stage and sound system, LED lighting, microphone & media equipment, technical support, video systems & exclusive Wlan.





# Some feedback.

## A complete success

We would like to take a moment to express our gratitude to your team for another wonderful week in Berlin. The conference was great, and its success was in large part thanks to your incredible staff. They were attentive, professional, and kind. David, Pi, Taylan, Amon, Sascha, Sven, Jurgen, Alex, Florian, Stefan, Mary, Alex, Katja, and Tom were especially helpful. Their flexibility and willingness to go above and beyond to make sure everything was taken care of was greatly appreciated. We couldn't have done it without them! Thanks again for being such a great property to work with; your hospitality and service were more than satisfactory as usual. We are excited to work together again for next year's conference!

### April 2024

Dana Jacobucci

The Forum of Incident Response and Security Teams, Inc

## Attentive care

We were very satisfied with our event at the MOA and everything went very well. Both the preparation and communication went smoothly and the service provided by the staff on site was great and there was always someone available for us - both from the technical and service departments. The food was also praised by everyone and the participants were satisfied and felt comfortable. So thank you again for the great cooperation. We were very happy with the preparation, implementation and follow-up with your team. Should we meet again in Berlin, we will gladly come back to you.

### May 2023

Maxi Wolff

Office employee & event management

Der Kinderschutzbund Bundesverband e.V.



# Some feedback.

## Flexible, spontaneous & successful

On behalf of my colleagues, I would like to thank you very much for the friendly and pleasant support you provided before and during our event at your premises. We thought the event was a great success. It was particularly pleasant for me to organize the event with you.

Everyone involved (in the planning, banquet and technical departments) responded to our wishes in a flexible, friendly and conscientious manner. We were particularly impressed that you found a quick solution for us and made our conference with 170 participants possible at such short notice. Thank you very much!

### June 2023

Sabine Schoppe  
Office and Event Manager  
Service ING Business Banking

## Awesome IT

"Many thanks to the entire MOA Berlin team for the good cooperation and especially for the preparation of the MOA IT team. Based on our preliminary discussion, the IT team set up an IT structure individually tailored to our event with an exclusive VLAN over 2 floors (200Mbit/s) including additional LAN connections.

Our large-scale, 2-day congress attracted almost 500 guests, who attended three keynote speeches, numerous presentations and the exhibition with 25 partners. The event ran without technical problems, we had a contact person and seamless (technical) support at all times. We had great fun working with the MOA team. We are already looking forward to the next event."

### June 2022

Anonymized Project Manager  
TOP TEN börsennotiertes Softwareunternehmen weltweit







## Want MOA?

### **MOA, you make me feel so high!**

Catch the feeling for a moment: a flight over & through MOA Berlin. **[This way!](#)**

### **Nice to #suite you!**

Want to take a look at our maisonette suites? Ideal for private meetings or small meetings.

**[This way!](#)**

### **Sweet dreams!**

Take a look at our Privilege double rooms

**[This way!](#)**



# Numbers, data, facts.

| Room<br>1st floor | Ceiling<br>height<br>4,00 m<br>Area | Measures<br>(m) | Parliament | U-shape | Block/<br>Board | Chairs in<br>rows | Round table<br>á 10 Pax | Cabaret<br>á 7 Pax |
|-------------------|-------------------------------------|-----------------|------------|---------|-----------------|-------------------|-------------------------|--------------------|
| <b>MOA 1</b>      | 63 sqm                              | 11,2 x 5,6      | 24         | 16      | 20              | 40                | 20                      | 14                 |
| <b>MOA 2</b>      | 75 sqm                              | 11,2 x 6,7      | 30         | 18      | 24              | 50                | 20                      | 14                 |
| <b>MOA 3</b>      | 158 sqm                             | 12,6 x 12,5     | 98         | 32      | 40              | 150               | 80                      | 70                 |
| <b>MOA 4</b>      | 141 sqm                             | 9,5 x 14,8      | 90         | 32      | 34              | 120               | 80                      | 56                 |
| <b>MOA 5</b>      | 265 sqm                             | 17,9 x 14,8     | 140        | 42      | 56              | 240               | 120                     | 105                |
| <b>MOA 6</b>      | 289 sqm                             | 13,7 x 21,1     | 160        | 44      | 52              | 250               | 120                     | 84                 |
| <b>MOA 7</b>      | 197 sqm                             | 13,3 x 14,8     | 86         | 36      | 56              | 180               | 100                     | 70                 |
| <b>MOA 8</b>      | 279 sqm                             | 18,6 x 15,0     | 148        | 44      | 56              | 240               | 150                     | 105                |
| <b>MOA 9</b>      | 407 sqm                             | 19,1 x 21,3     | 224        | 48      | 60              | 390               | 180                     | 126                |
| <b>MOA 10</b>     | 374 sqm                             | 19,0 x 19,7     | 174        | 44      | 52              | 300               | 180                     | 126                |
| <b>MOA 11</b>     | 204 sqm                             | 11,0 x 18,5     | 80         | 44      | 52              | 200               | 80                      | 56                 |
| <b>MOA 12</b>     | 492 sqm                             | 32,8 x 15,0     | 256        | 78      | 92              | 420               | 210                     | 147                |
| <b>MOA 13</b>     | 99 sqm                              | 14,0 x 7,1      | 30         | 24      | 30              | 60                | 30                      | 21                 |



# Numbers, data, facts.

| Room<br>1st floor    | Ceiling<br>height<br>4,00 m<br>Area | Measures<br>(m) | Parliament | U-shape | Block/<br>Board | Chairs in<br>rows | Round table<br>á 10 Pax | Cabaret<br>á 7 Pax |
|----------------------|-------------------------------------|-----------------|------------|---------|-----------------|-------------------|-------------------------|--------------------|
| <b>MOA 1+2</b>       | 138 sqm                             | 11,2 x 12,3     | 70         | 30      | 40              | 140               | 70                      | 49                 |
| <b>MOA 1-3</b>       | 298 sqm                             | 23,8 x 12,5     | 156        | 60      | 66              | 300               | 150                     | 105                |
| <b>MOA 1-4</b>       | 435 sqm                             | 33,3 x 12,5     | 228        | 80      | 86              | 430               | 270                     | 189                |
| <b>MOA 1-5</b>       | 695 sqm                             | 51,2 x 12,5     | 402        | 170     | 126             | 730               | 450                     | 315                |
| <b>MOA 3+4</b>       | 295 sqm                             | 22,1 x 12,5     | 150        | 52      | 64              | 300               | 170                     | 119                |
| <b>MOA 3-5</b>       | 568 sqm                             | 40,3 x 12,5     | 174        | 92      | 124             | 580               | 350                     | 245                |
| <b>MOA 4+5</b>       | 406 sqm                             | 27,5 x 14,8     | 224        | 62      | 74              | 390               | 200                     | 168                |
| <b>MOA 6+7</b>       | 485 sqm                             | 13,5 x 35,9     | 212        | 56      | 60              | 400               | 220                     | 154                |
| <b>MOA 6+9</b>       | 705 sqm                             | 32,8 x 21,2     | 346        | 60      | 74              | 550               | 300                     | 210                |
| <b>MOA 7+8</b>       | 498 sqm                             | 31,9 x 14,9     | 238        | 52      | 60              | 420               | 250                     | 175                |
| <b>MOA 6-9</b>       | 1167 sqm                            | 32,5 x 35,9     | 500        | -       | -               | 900               | 550                     | 385                |
| <b>MOA 8+9</b>       | 682 sqm                             | 18,8 x 36,3     | 376        | 74      | 90              | 630               | 330                     | 231                |
| <b>MOA 10-12</b>     | 1120 sqm                            | 32,0 x 35,0     | 500        | -       | -               | 800               | 450                     | 315                |
| <b>MOA 6+9+10+11</b> | 1294 sqm                            | 65,6 x 19,0     | 500        | -       | -               | 1050              | 560                     | 392                |
| <b>MOA 6-12</b>      | 2258 sqm                            | 65,0 x 33,5     | 800        | -       | -               | 1800              | 900                     | 630                |



# Numbers, data, facts.

| Room<br>2nd floor | Ceiling<br>height<br>12,00 m<br>Area       | Measures<br>(m) | Parliament | U-shape | Block/<br>Board | Chairs in<br>rows | Round table<br>á 10 Pax | Cabaret<br>á 7 Pax |
|-------------------|--|-----------------|------------|---------|-----------------|-------------------|-------------------------|--------------------|
| <b>Atrium</b>     | 600 sqm<br><br><b>Deckenhöhe</b><br>3,10 m | 50,0 x 12,0     | 300        | 112     | 124             | 600               | 250                     | 175                |
| <b>MOA 14</b>     | 128 sqm                                    | 14,7 x 8,7      | 56         | 32      | 40              | 125               | 60                      | 42                 |
| <b>MOA 15</b>     | 161 sqm                                    | 12,2 x 13,2     | 72         | 38      | 52              | 160               | 80                      | 56                 |
| <b>MOA 16</b>     | 105 sqm                                    | 7,5 x 14,0      | 42         | 30      | 36              | 100               | 60                      | 42                 |
| <b>MOA 17</b>     | 204 sqm                                    | 17,0 x 12,0     | 42         | 34      | 40              | 120               | 90                      | 63                 |
| <b>MOA 15+16</b>  | 266 sqm                                    | 19,7 x 13,5     | 126        | 46      | 56              | 240               | 140                     | 98                 |
| <b>MOA 15-17</b>  | 470 sqm                                    | 19,7 x 23,9     | 168        | 66      | 84              | 380               | 200                     | 140                |



# Numbers, data, facts.

| Room<br>3rd floor | Ceiling<br>height<br>3,10 m<br>Area | Measures<br>(m) | Parliament | U-shape | Block/<br>Board | Chairs in<br>rows | Round table<br>á 10 Pax | Cabaret<br>á 7 Pax |
|-------------------|-------------------------------------|-----------------|------------|---------|-----------------|-------------------|-------------------------|--------------------|
| <b>MOA 18</b>     | 45 sqm                              | 4,3 x 10,4      | -          | -       | -               | -                 | -                       | -                  |
| <b>MOA 19</b>     | 58 sqm                              | 6,8 x 8,5       | 18         | 12      | 16              | 44                | 20                      | 14                 |
| <b>MOA 20</b>     | 52 sqm                              | 6,0 x 8,7       | 18         | 14      | 16              | 40                | 20                      | 14                 |
| <b>MOA 21</b>     | 56 sqm                              | 6,4 x 8,7       | 24         | 16      | 20              | 46                | 20                      | 14                 |
| <b>MOA 22</b>     | 123 sqm                             | 14,7 x 8,4      | 54         | 24      | 30              | 90                | 40                      | 28                 |
| <b>MOA 23</b>     | 76 sqm                              | 9,8 x 7,8       | 38         | 20      | 28              | 72                | 30                      | 21                 |
| <b>MOA 24</b>     | 42 sqm                              | 6,0 x 7,0       | 16         | 8       | 12              | 33                | 10                      | 7                  |
| <b>MOA 25</b>     | 51 sqm                              | 4,9 x 10,5      | 14         | 14      | 16              | 35                | 20                      | 14                 |
| <b>MOA 19+20</b>  | 110 sqm                             | 12,8 x 8,6      | 48         | 26      | 32              | 80                | 60                      | 42                 |
| <b>MOA 21+22</b>  | 179 sqm                             | 21,0 x 8,5      | 84         | 50      | 56              | 130               | 90                      | 63                 |
| <b>MOA 22+23</b>  | 198 sqm                             | 24,5 x 8,1      | 96         | 54      | 66              | 140               | 130                     | 91                 |
| <b>MOA 21-23</b>  | 259 sqm                             | 30,5 x 8,5      | 116        | 70      | 86              | 180               | 150                     | 125                |



**SUSTAINABLE  
MEETINGS  
BERLIN**

High  
Performer  


**Zertifizierter Partner**

**GSTC Recognized**



**We are High Performer!**

We were one of the first conference hotels in Berlin to be certified as a high performer by both **Sustainable Tourism Berlin** and **Sustainable Meetings Berlin** in an **independent double audit** in the hotel sector.

– audited in Governance, Risk & Compliance (GRC), Economy, Environment and Society

More about our goals under [Sustainability Strategy 2024](#)  
Everything about the sustainability topic at [MOA Sustainability Hub](#)





## Green Travel!

The **MOA-MICE Event Ticket** with DB

Advantages for our event guests of MOA Berlin

- uniform fixed price
- city ticket for public transport included
- sustainable travel
- individual ticket booking by participants
- prerequisite: informal proof of event participation to DB staff is sufficient

More information under [Deutsche Bahn Veranstaltungsticket](#)

Book the MOA Berlin Mice-Ticket at our special rate under [MICE-Ticket](#)



# Convention Team



**Katja Issig**

Head of Convention &  
Events

**kis@moa.de**

+49 30 394043 7301



**Shirley Tramper**

Assistant Head of Convention  
& Events

**str@moa.de**

+49 30 394043 7308



**Chris Ewald Jelinek**

Team Assistant Convention  
Sales & Events

**cje@moa.de**

+49 30 39 40 43 7318



**Valeria Grassi**

Convention Sales  
Coordinator

**vgr@moa.de**

+49 30 39 40 43 7302



**Julia Grigorieva**

Convention Sales  
Manager

**jgr@moa.de**

+49 30 39 40 43 7303

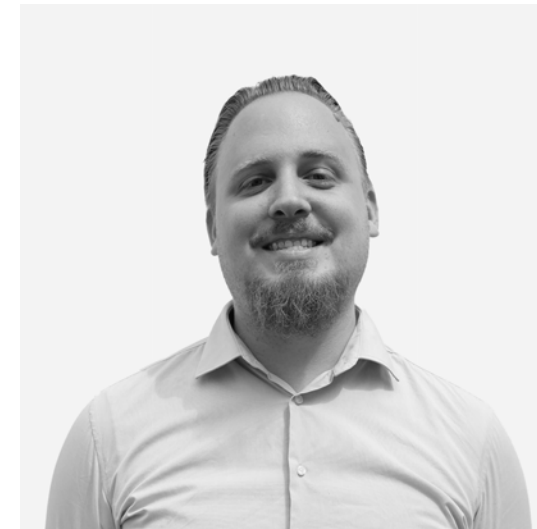


**Yannick Hilker**

Convention Sales  
Manager

**yhi@moa.de**

+49 30 39 40 43 7305



**David Schmidt**

Convention Manager

**dsc@moa.de**

+49 30 39 40 43 7315



**Jan-Phillip Preuß**

Junior Convention  
Manager

**jpr@moa.de**

+49 30 39 40 43 7306

**we like to  
help you**

The MOA MEET Team



# Convention Team



**Catalina Wulf**  
Trainee  
Convention Sales  
[cwu@moa.de](mailto:cwu@moa.de)  
+49 30 394043 7311



**Nicola Friedenberger**  
Trainee  
Convention Sales  
[nfr@moa.de](mailto:nfr@moa.de)  
+49 30 394043 7316



**Yaicel Lambert Leyva**  
Trainee  
Convention Sales  
[yla@moa.de](mailto:yla@moa.de)  
+49 30 394043 7304



**Noah Vitiello**  
Trainee  
Convention Sales  
[nvi@moa.de](mailto:nvi@moa.de)  
+49 30 394043 7317

# Sales Team



**Sascha Hildebrandt**  
Head of Sales  
[shi@moa.de](mailto:shi@moa.de)  
+49 30 39 40 43 7321



**Marc Henning**  
Senior Sales Manager  
[mhe@moa.de](mailto:mhe@moa.de)  
+49 157 822 12 7309



**Teodora Todorova**  
Sales Managerin  
[tto@moa.de](mailto:tto@moa.de)  
+49 30 39 40 43 7322



**Anne Krauß**  
Sales Managerin  
[akr@moa.de](mailto:akr@moa.de)  
+49 30 39 40 43 7325



**Nhi Nguyen**  
Team Assistant Sales  
[nng@moa.de](mailto:nng@moa.de)  
+49 30 39 40 43 7324

we like to  
help you

The MOA MEET Team





# we live conventions.

Secure great event conditions for your  
next event now.

[Our Eventlovers-Newsletter](#)





0 30 39 40 43 7301 | [moa.de](http://moa.de) | [meet@moa.de](mailto:meet@moa.de) | [moa.de/eventlovers](http://moa.de/eventlovers)